

# MONTHLY MEMBERSHIP PROGRESS REPORT

District 11 A2

Results as of: 1/31/2020

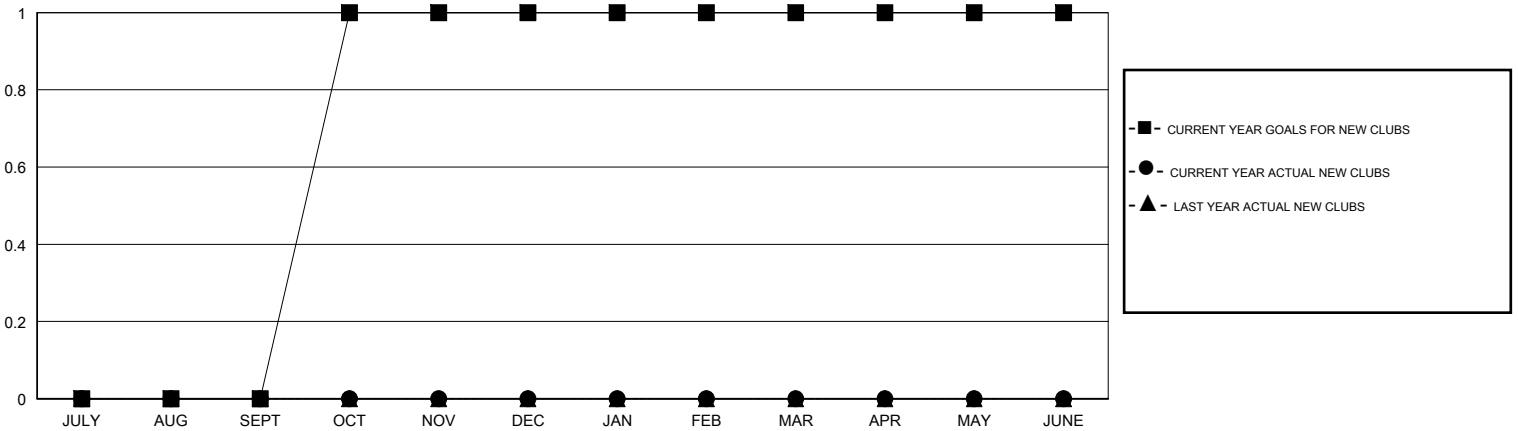
GMT:

LOCATION MICHIGAN

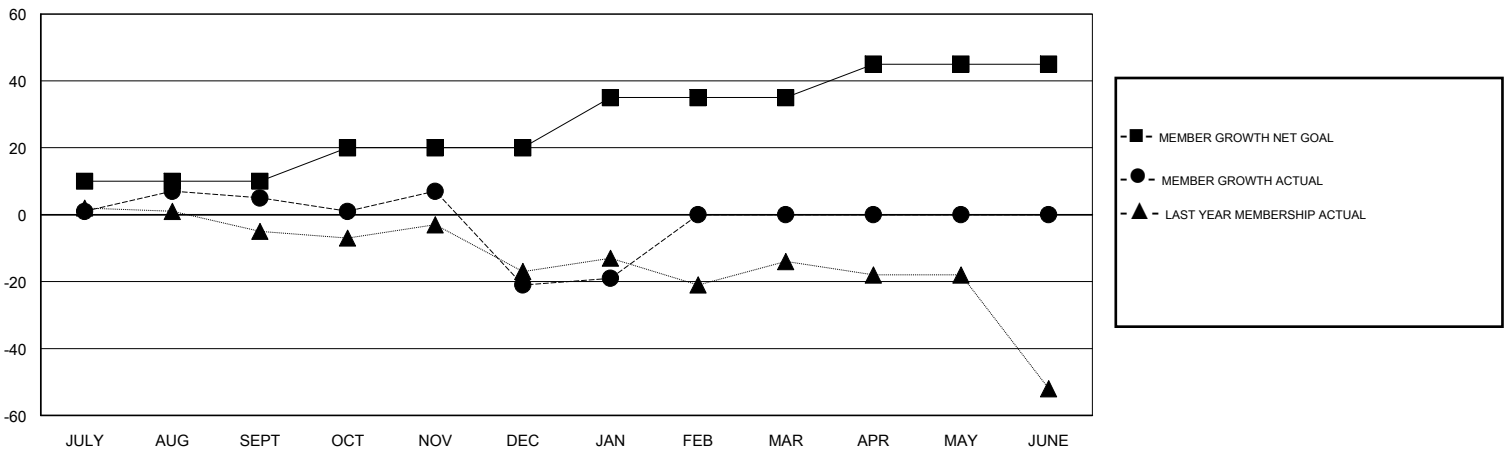
GMT CA

Clubs				Members			
RESULTS FOR 2019-2020				RESULTS FOR 2019-2020			
QUARTER	NEW CLUB GOAL	NEW CLUBS	DROPPED CLUBS	QUARTER	MEMBER GROWTH NET GOAL	MEMBER GROWTH ACTUAL	DROPPED MEMBERS ACTUAL (including transfers)
JULY/AUG/SEPT	0	0	0	JULY/AUG/SEPT	10	33	20
OCT/NOV/DEC	1	0	2	OCT/NOV/DEC	10	29	53
JAN/FEB/MAR	0	0	0	JAN/FEB/MAR	15	8	6
APR/MAY/JUNE	0	0	0	APR/MAY/JUNE	10	0	0

GOALS AND ACTUAL NEW CLUBS CUMULATIVE



GOALS AND ACTUAL MEMBERS CUMULATIVE



DROPPED CLUBS: 2	23 CLUBS OF 41 ADDED 1 OR MORE NEW MEMBERS	<u>GENDER DISTRIBUTION</u> MALE 929 (70.11%) FEMALE 396 (29.89%)
<u>DROPPED MEMBERS</u> DECEASED 18 CLUB CANCELLED 19 OTHER 42 <hr/> TOTAL 79	<a href="#">CLICK HERE FOR CUMULATIVE MEMBERSHIP DATA</a>	TOTAL FAMILY UNIT MEMBERS 215 FAMILY MEMBERS PAYING HALF DUES 110